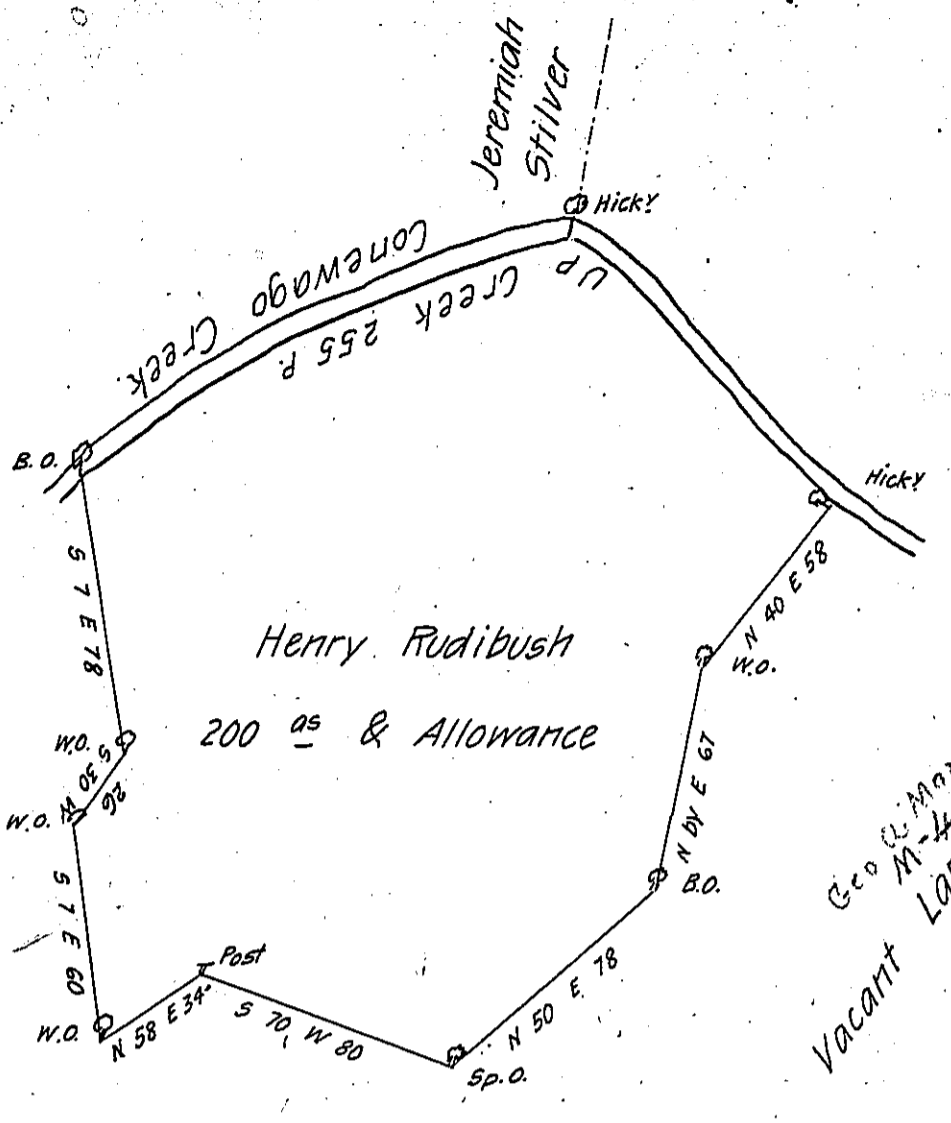


C 176 - 28



Geo. C. Mowbray  
M-45-3  
Vacant Land

C 172 - 234

Wm Roberts. Surveyor

A Draught of Henry Rudibush's Land situate on Conewago—  
 in the County of Lancaster. Containing Two hundred Acres and Allowance  
 of six P. Cent for Roads by virtue of the Hon<sup>ble</sup> the Proprietors Warr<sup>t</sup>  
 bearing date the 18<sup>th</sup> Day of February 1743. Surveyed the 14<sup>th</sup> day of  
 March following

By

Tho. Cookson D.S.

To Mr Nicholas Scull

Surv<sup>r</sup> Gen<sup>l</sup>

IN TESTIMONY that the above is a copy of the original remaining on file in  
 the Department of Internal Affairs of Pennsylvania, made  
 conformably to an Act of Assembly approved the 16th day of  
 February, 1833, I have hereunto set my Hand and caused  
 the Seal of said Department to be affixed at Harrisburg,  
 this fifteenth day of June 1906

*Loeac P. Brown*  
 Secretary of Internal Affairs.